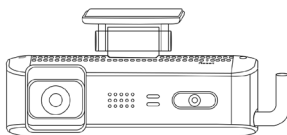




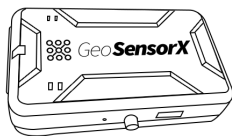
# DC400 AI Cam

## Hardware Installation Guide

### Components for Installation



DC400 AI Dash Cam



DG800 Data Gateway

\*Not included in the box



Allen key of  
cradle x1



Allen key of  
cover x1



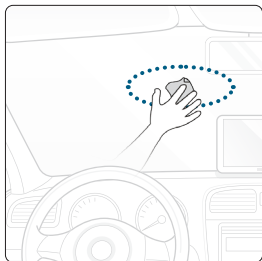
Cable clip x4



Mount  
attachment  
tape x1

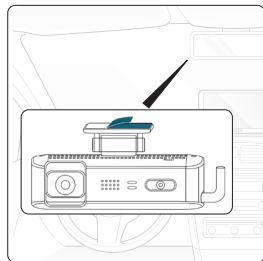
# DC400 AI Cam Hardware Installation Guide

1



Before installing the device, use a dry cloth to clean the windshield. Impurities, such as fingerprints or dust, on the windshield or device lens, may worsen installation stability or recording quality.

2

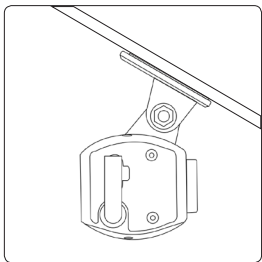


Attach the mount attachment tape on the top-side of the mount and partially remove the protective sheet. Attach the DC400 AI Dash Cam in a temporary place before making final adjustments with the GSX AICam App.

## [Attention!]

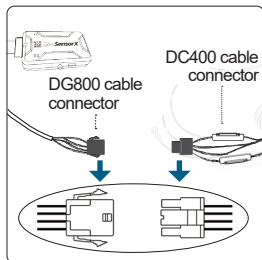
Refrain from installing the product in areas that block the driver's line of sight to the road, highway signs, signals and does not obstruct the view of the driver from the indoor camera. Recommended location is below the rear view mirror, driver side of the windshield.

3



Adjust camera angle so that it hangs perfectly vertical.

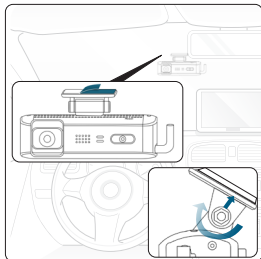
4



1. Connect the AI Dash Cam to 4-pin Molex connector of the DG800 cable.
2. Start the vehicle engine to turn the device on.

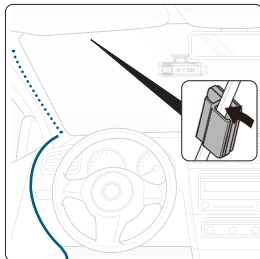
## DC400 AI Cam Hardware Installation Guide

5



Completely remove the protective sheet from the mounting tape. Permanently attach the DC400 AI Dash Cam to the windshield at the identified location. Then tighten screw on the mount using the Allen key.

6



Run cable across top of windshield. Secure using cable clip or tuck cable under glass seal around windshield.

7



After successful hardware installation, Install the GSX AICam App by scanning the QR code..

Follow the DC400 WiFi Configuration and Camera Alignment guide to pair the DC400 to a DG800 data gateway and camera alignment to improve the camera AI detection.